



CDRlive[®] DEVICES LOOKUP (IMEI)

The **Devices Lookup (IMEI)** offering is part of the VAS solution. All mobile devices have a unique 15-digit number, called the device's IMEI (International Mobile Equipment Identity). This number provides additional data on every mobile device used in the organization. Based on this number, you can check some information about the device, e.g., brand or model.

Key Features:

- ✓ Provides network carrier and country of origin.
- ✓ Displays warranty information.
- ✓ Gives the date of purchase.
- ✓ Confirms the system version.
- ✓ Shows device specification.

Benefits:

- ✓ Keeps track of your devices anywhere, any time.
- ✓ Locks and unlocks devices remotely.
- ✓ Manages device upgrades.

How it Works:



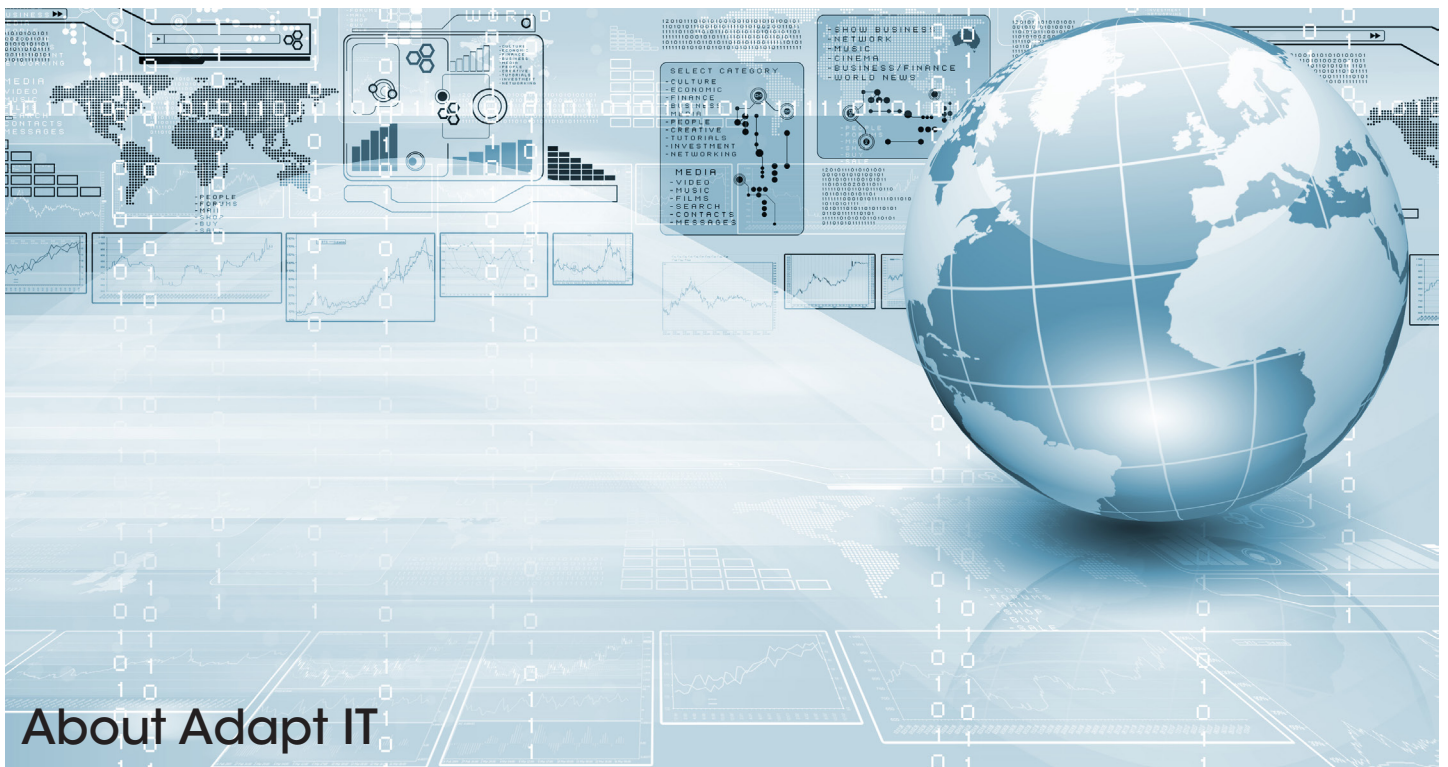
Shared Information pool on exiting IMEIs



Search & Monitor company IMEIs



Corporate IMEIs read into corporate system



About Adapt IT

Adapt IT is a leader in ICT (information and communication technology) market through the provision of turnkey solution to the Education, Manufacturing, Energy, Financial Services, Hospitality and Telecommunication sector, employing over 1000 technology professionals and servicing more than 10 000 customers in 40 countries.

📍 Adapt IT Johannesburg Campus,
152 14th Road,
Midrand, Johannesburg

☎ +27 104 942 888

✉ sps-sales@adaptit.tech